



Community Wildfire Protection Plan (CWPP)



Berkeley Fire Department
May 16, 2023



What has Changed?

In the last 10 years in California...

- 1 of every 8 acres has burned
- 173 lives have been lost
- 43,000+ homes destroyed

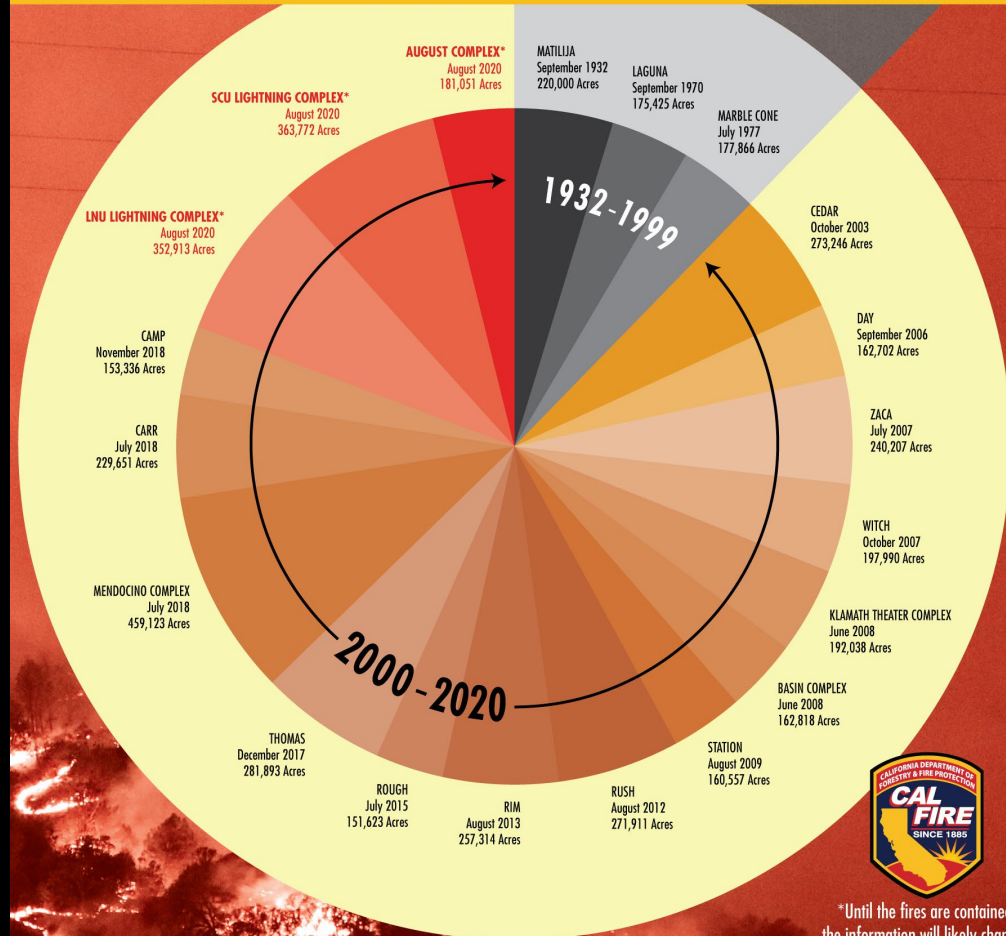
As the climate changes...

- more severe droughts will occur
- atmospheric rivers will change vegetative growth patterns (2022-23)
- fires have become more violent

The coming fire season...

- Peak to begin June 26
- fast moving ground fires

TOP 20 LARGEST CALIFORNIA WILDFIRES



*Until the fires are contained, the information will likely change

Process

Assessment

Existing conditions + risk assessment +
recommendations + priorities

Engagement

Engage interested parties

Action

Public review and approve CWPP



Assessment

Existing Natural and Built Conditions (Posted on CWPP Hub)

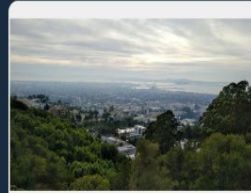
- Topography and Watersheds
- Climate and Weather
- Vegetation
- Public Ownership
- Fire History
- Hazard Assessment
- Risk Assessment



Map Gallery

Use these tools to explore the CWPP's mapped data.

Come back for additional maps as we develop more!



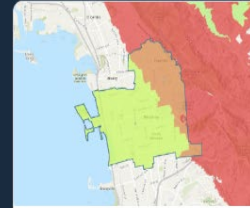
Berkeley CWPP
Community Base Map

A web app used to showcase the City of Berkeley's Community Wildfire Protection Plan (CWPP)..



Map Your Project Web
Map App

A web map application to gather project locations throughout the City of Berkeley and surrounding..



Fire Hazard Severity Zones

A map showing CAL FIRE's Fire Hazard Severity Zones (FHSZ) within the city of Berkeley as well..



City of Berkeley Council
Districts

A map showing districts within the City of Berkeley.



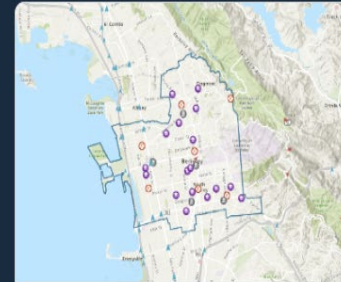
How to Use this Hub

A short tutorial on how to use the City of Berkeley's Hub, Community Base Map, and other online tools.



Frequently Asked Questions

Use of FAQs: Berkeley CWPP FAQs will be posted on the CWPP Hub and updated throughout the planning process as questions..



Community Base Map Explorer

A web map application designed specifically to explore the City of Berkeley's CWPP Community Base Map. The Community Base Map can als..

Engagement

The public engagement process included:

- Disaster and Fire Safety Commission Meetings
- City website
- Media Releases
- Newsletters (sign up on e-mail list)
- Surveys
- Hub <https://cwpp-berkeley.hub.arcgis.com/>
- E-mail cwpp@cityofberkeleyinfo

News

Subscribe to receive [news updates](#) in your email inbox,



Help shape plan to protect our community from wildfires

Attend a public meeting on August 3 and fill out an online survey by August 31 to give input on how the City and community can best reduce wildfire risk.

Proposed Priority Strategies

Strategies were identified via a survey of residents

- Fire Prevention
- Safety and Evacuation
- Resident Mitigation
- Wildfire Response
- Large-scale Landscape Treatment



Results

- Shared vision of current situation
- Common, shared, or parallel paths for improvement
- Compatible planning documents
- Open statement of priorities
- Increased potential for funding/efficiency
- Greater collaboration with partners/stakeholders



Photo Courtesy: UCB Calisphere

An aerial photograph of a densely populated residential neighborhood. The houses are built on a hillside, surrounded by lush green trees. The architecture varies, with many houses featuring gabled roofs and some with solar panels. The overall scene is a mix of natural greenery and human-made structures.

Action Plan

Goal 1.1 [Prevention]

- Expand the Wildland Division workforce (for outreach + vegetation removal crews)
 - Interns
 - Contractors
 - Training
 - *Handcrew*



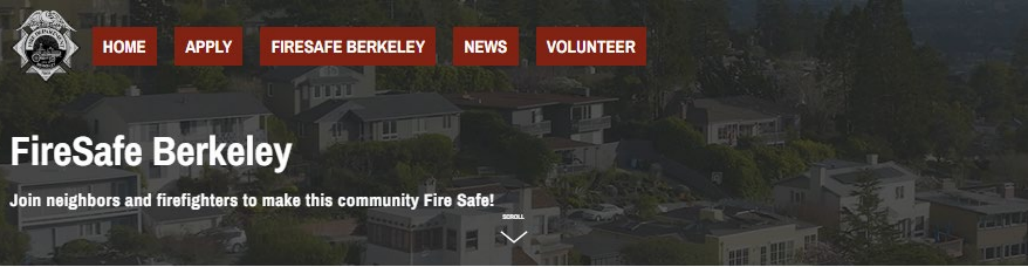
Goal 1.2 [Prevention]

- Recruit and retain WUI inspectors to perform risk assessments of individual properties and homes
 - Duty Statement
 - Retired Annuitants
 - Recruitment
 - *Retention strategies*



Goal 1.3 [Prevention]

- Develop a comprehensive public education campaign to encourage property protection for fire, including home hardening, defensible space, and vegetation management. Partner with community groups in campaign delivery.
 - Website, Direct Mail, Social Media
 - Video
 - Ambassadors
 - FireWise
 - *Education*



Lets Make Berkeley FireSafe!

Berkeley is at higher risk of wildfire because of its topography, winds, and adjacent wildland areas. The increased threat is magnified by dense older housing, abundant vegetation right next to homes, and narrow roads.

To prevent catastrophic wildfires from spreading through Berkeley, firefighters are coordinating prevention measures directly with residents.

"Our goal is for firefighters and residents to work together to transition Berkeley into a Fire Safe community," David Sprague, Interim Fire Chief



Prepare for your Annual Inspection

All properties in the City's Very High Fire Danger Severity Zone are inspected annually. Learn about this process and how you can prepare.

[LEARN MORE](#)



Understand wildfire risks in Berkeley

Discover how wildfires spread in urban environments like Berkeley.

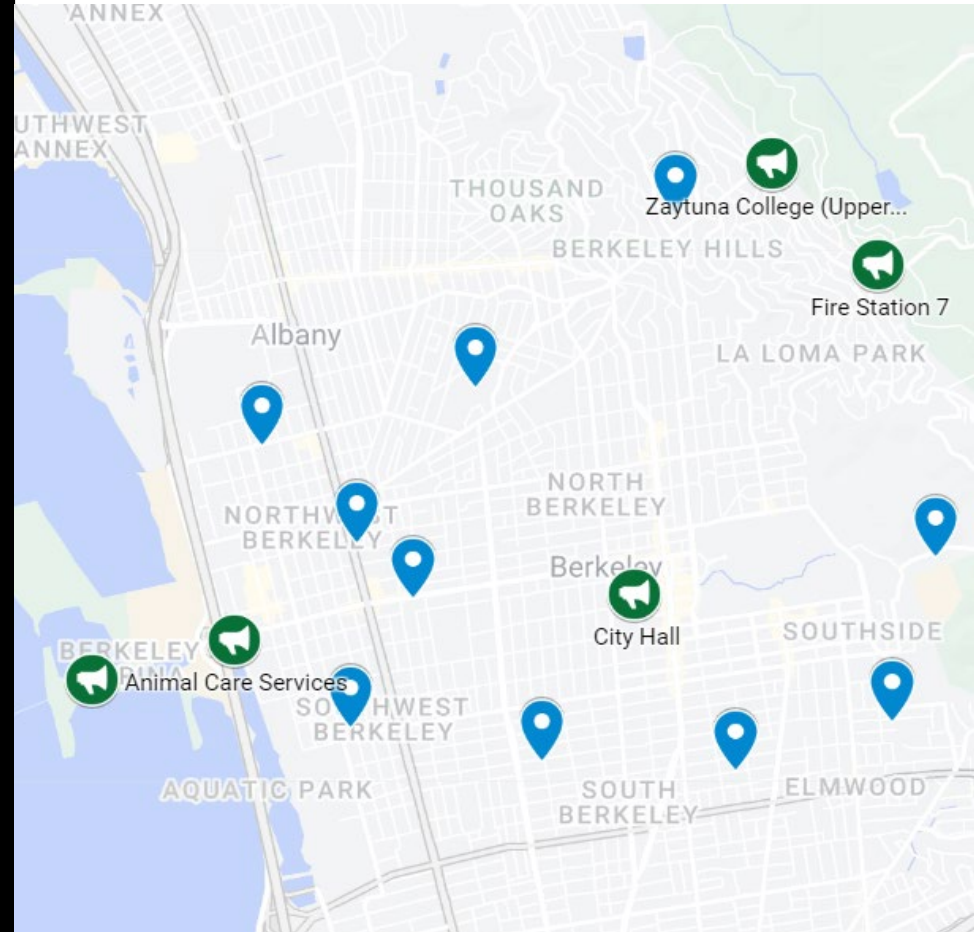
[LEARN MORE](#)



Create your Defensible Space

Goal 2.1 [Safety & Evac]

- Evaluate the Berkeley roadway network's ability to support evacuation and response. Identify and implement network improvements to reduce response times and speed evacuation times.
 - Evacuation Time Study
 - Outdoor Warning System
 - *Safe Passages*



Goal 2.2 [Safety & Evac]

- Provide ongoing public education about safe fire evacuation practices. Promote community understanding of fire weather (red flag warnings and extreme fire weather). Encourage preemptive relocation during extreme fire weather to reduce risks to community members.
 - On-going OES work
 - *Strengthen educational campaign*
 - *Create additional opportunities*
 - *Develop metrics / success?*
 - *Barriers to evacuation?*



Goal 2.3 [Safety & Evac]

- Use roadway network evacuation/response analysis to inform fire evacuation plans for responders and the community.
 - Identify TRAs
 - *Adjust Zonehaven*
 - *Safe Passages*

BEFORE

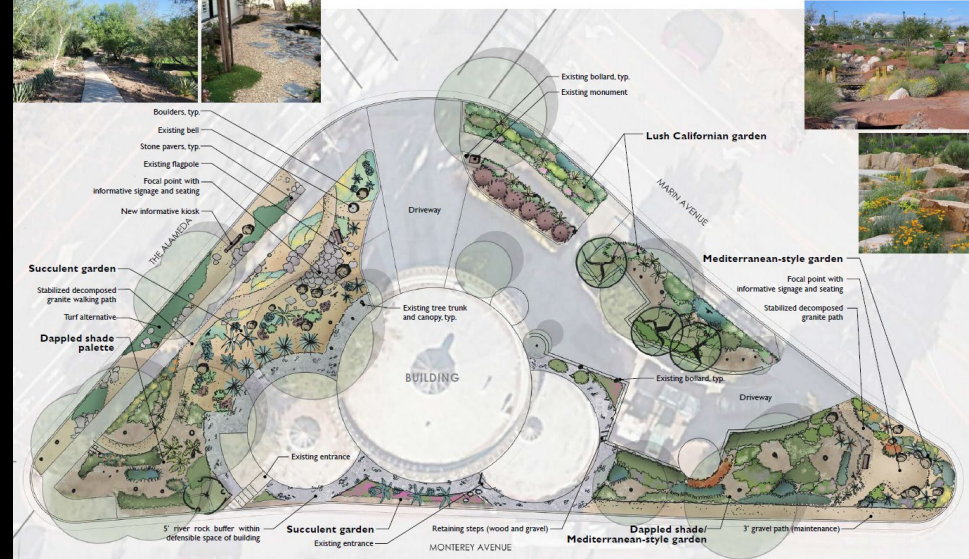


AFTER



Goal 3.1 [Resident Mitigation]

- Initiate annual inspection cycle to assess defensible space and enforcement compliance (including undeveloped properties + vacant homes)
 - Zone 0 Demonstration Garden
 - Implement New Inspection Software
 - Implement New Citation Process
 - Resident Assistance Program (RAP)



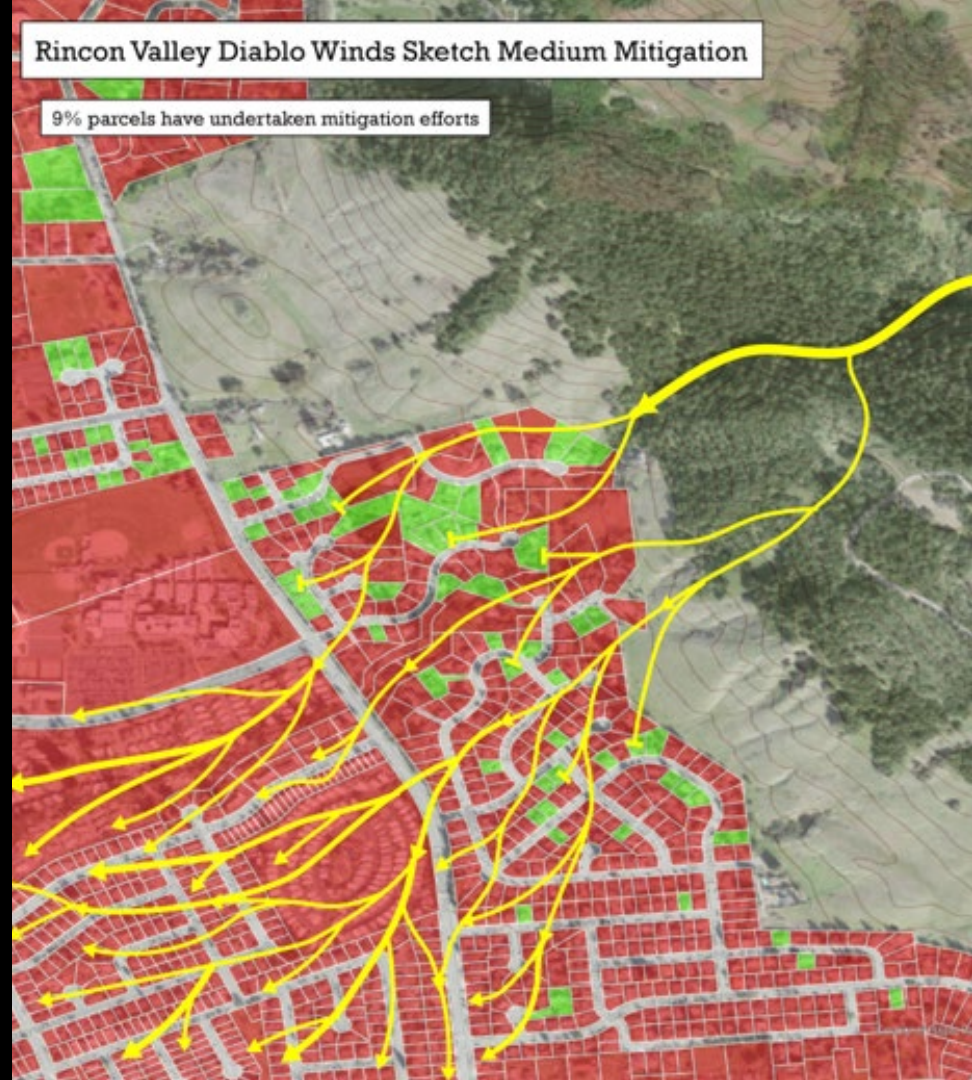
Goal 3.3 [Resident Mitigation]

- Promote home hardening retrofit of existing structures by providing guides, training, consultation, incentives, and inspections
 - Add to Defensible Space Inspection
 - Resident Assistance Program (RAP)
 - *Homeowner education/workshops*



Goal 4.1 [Wildfire Response]

- Use technology and volunteer / BFD fire patrols to detect fire ignition and enforce closures/ restrictions, no fireworks, no open flame, no smoking, and no portable BBQs.
 - *Evaluate options for expanded/enhanced detection*



Goal 4.2 [Wildfire Response]

- Update and enhance our regional wildfire response coordination policies and protocols to include training, temporary firefighter safety zones, response conditions, mutual and automatic aid agreements, and update hazard/ risk assessments.
 - Maintain Above Ground Water System (Measure Q)
 - Purchase 3k Water Tender
 - *Review Auto/Mutual Aid Agreements*
 - *Develop & coordination regional command training*



Goal 5.1 [Large Scale Landscape Treatment]

- Create incentives for hazardous tree and vegetation management within 100' of homes
 - Resident Assistance Program (RAP)
 - Leverage Measure FF funds with grants



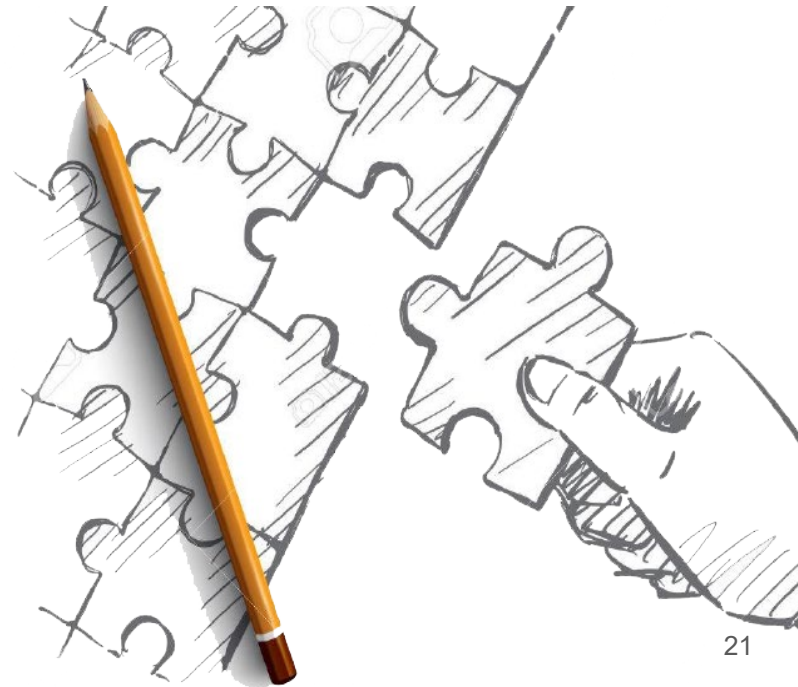
Goal 5.2 [Large Scale Landscape Treatment]

- Remove hazardous trees and vegetation on public property (parks and roadsides) and collaborate with agency partners on adjacent lands
 - Support PRW work
 - Evacuation routes / grant
 - EBRPD relationship
 - MOFD relationship



Made Possible By...

- WUI Division Staff
- WUI Division Vehicles
- Defensible Space Inspection Software
- Citation Platform
- Website, Direct Mail, Social Media
- Photo & Video Assets
- Resident Assistance Program (RAP) Pilots
- Home Hardening Equipment
- CWPP
- Outdoor Warning System
- Safe Passages / Paint Re-Fresh
- Mobile Command Software
- PRW Vegetation Management
- Chipping Software & Contractors



Learn More
about wildfire prep



berkeleyfire.com

